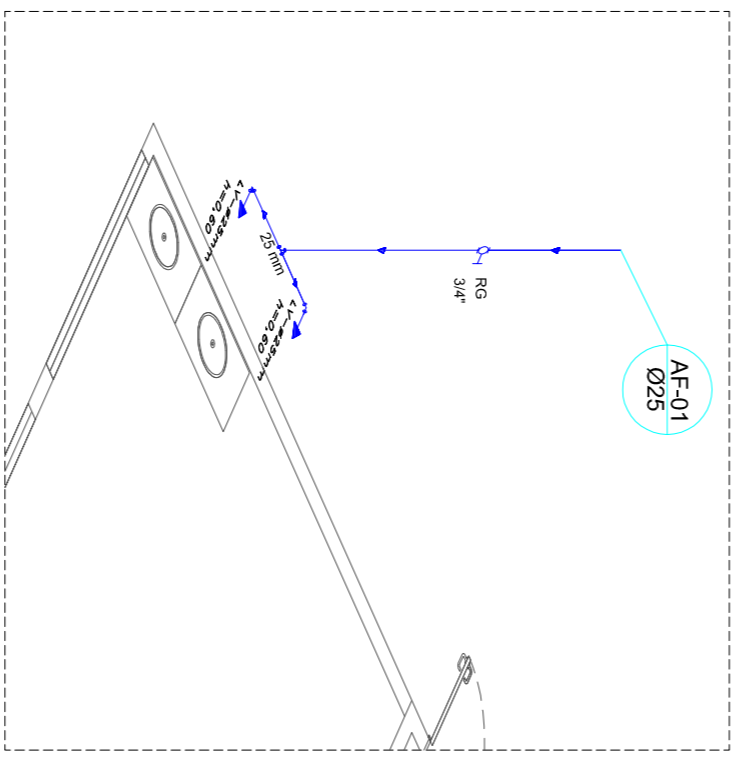
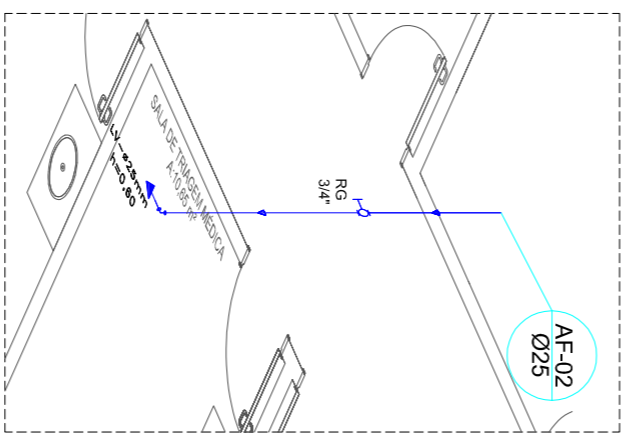


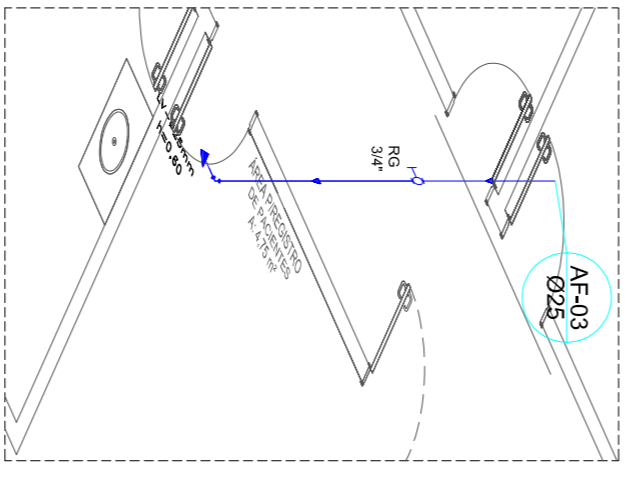
Detalhe Geral
Escala 1:50



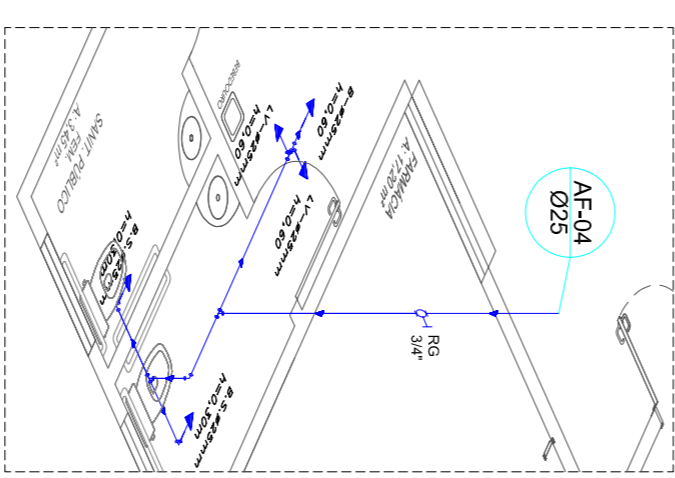
Detalhe H1
Escala 1:50



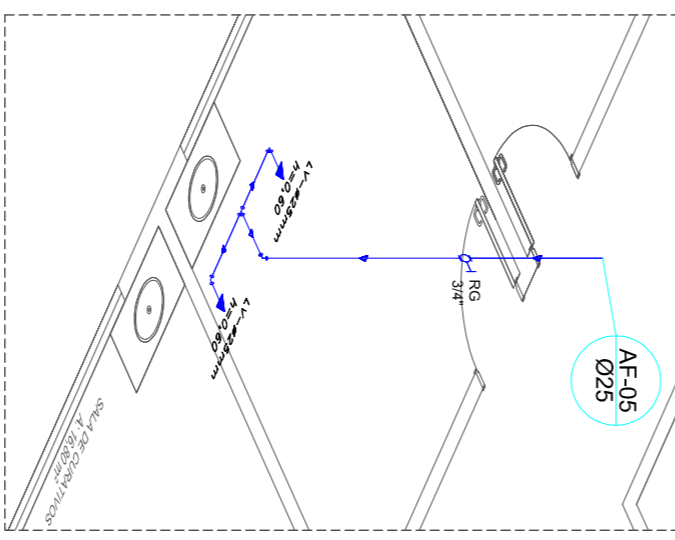
Detalhe H2
Escala 1:50



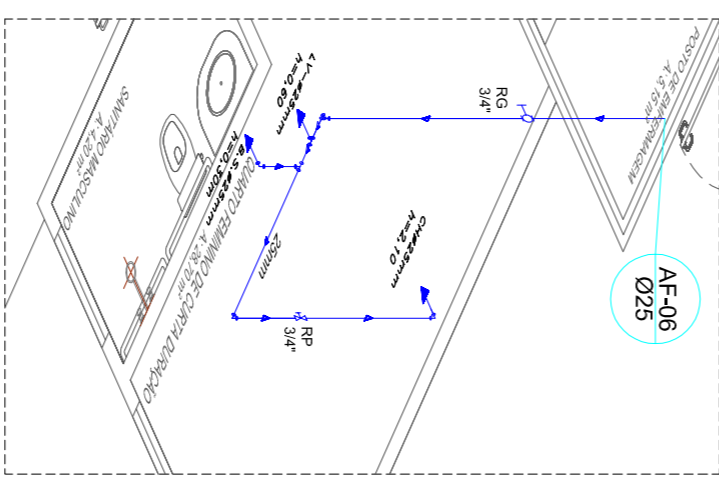
Detalhe H3
Escala 1:50



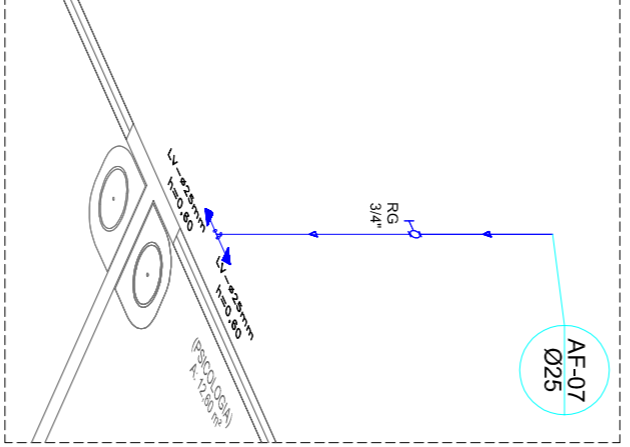
Detalhe H4
Escala 1:50



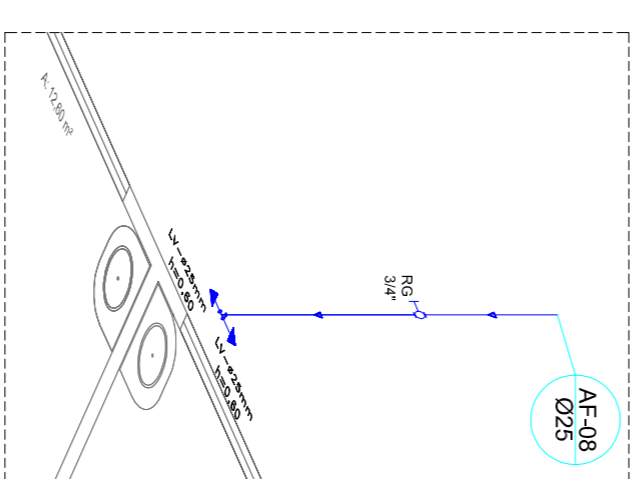
Detalhe H5
Escala 1:50



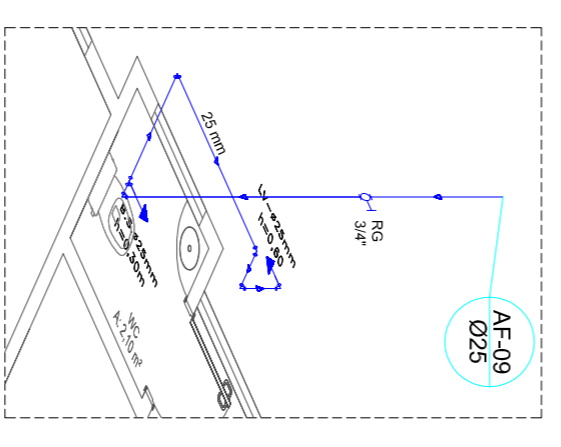
Detalhe H6
Escala 1:50



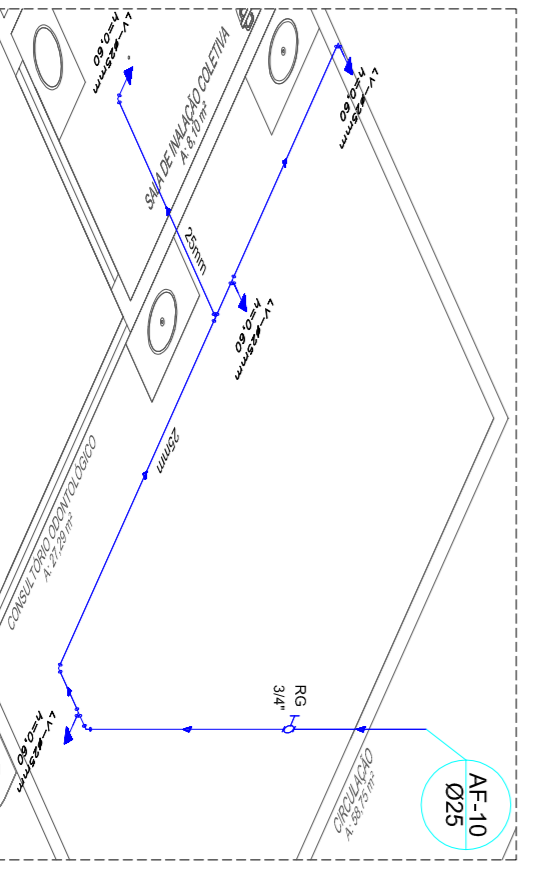
Detalhe H7
Escala 1:50



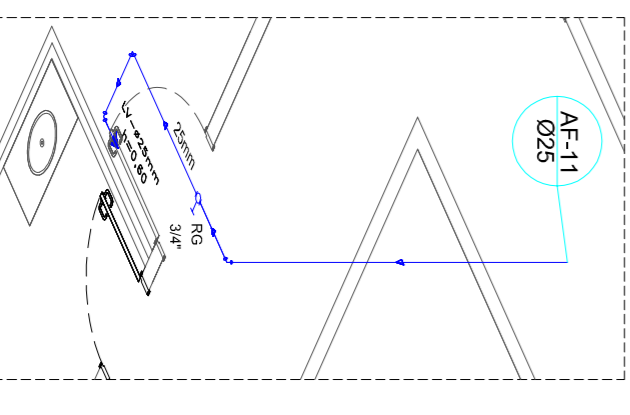
Detalhe H8
Escala 1:50



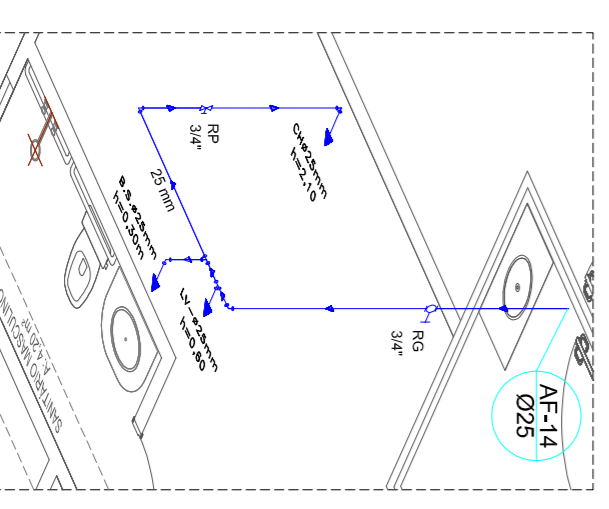
Detalhe H9
Escala 1:50



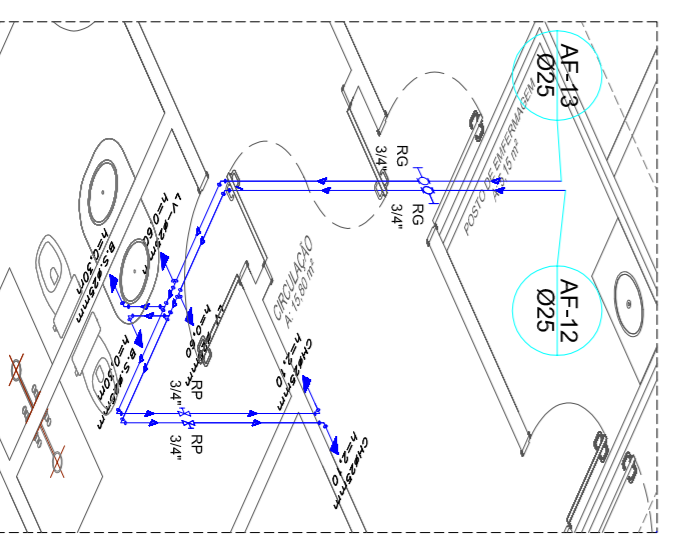
Detalhe H10
Escala 1:50



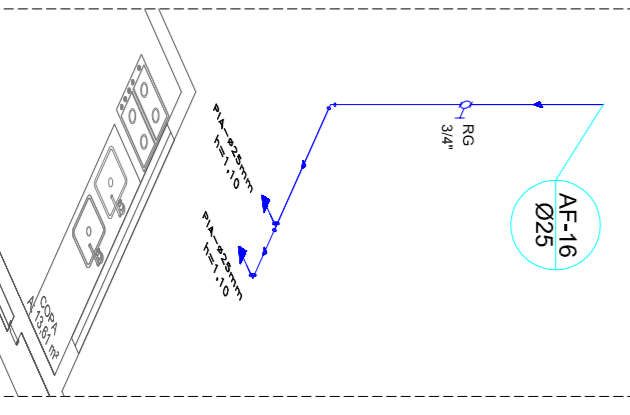
Detalhe H11
Escala 1:50



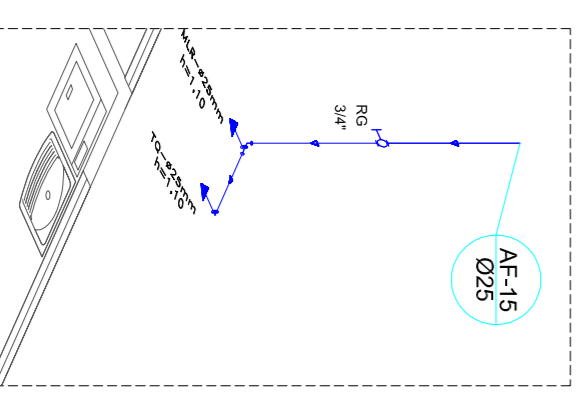
Detalhe H12
Escala 1:50



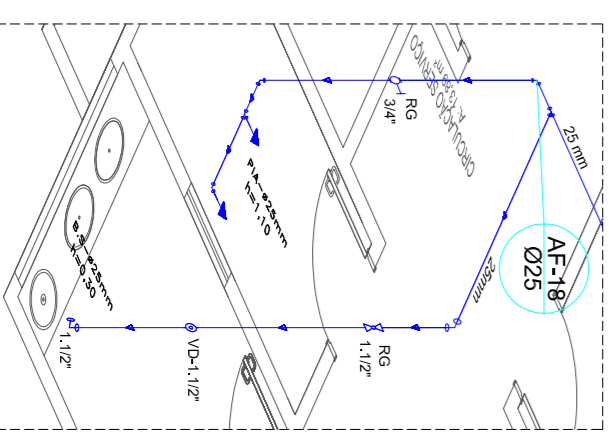
Detalhe H13
Escala 1:50



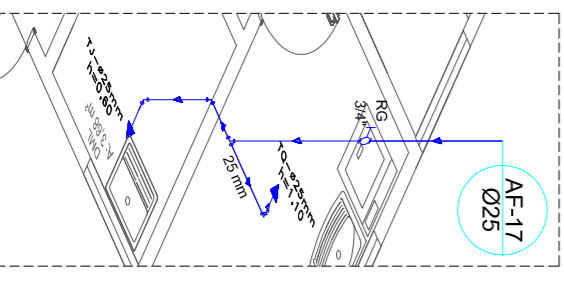
Detalhe H14
Escala 1:50



Detalhe H15
Escala 1:50



Detalhe H16
Escala 1:50



Detalhe H17
Escala 1:50



Prefeitura Municipal de Pontão
Av. João de Nêves 1419 Centro
Pontão - RS
(51) 35811930

ARQ:
AF 02

PROJETO UNIDADE BÁSICA DE SAÚDE PONTÃO-RS

PROPRIETÁRIO: PREFEITURA DE PONTÃO

RESPONSÁVEL TÉCNICO: UZIANE DE MOURA GUARINI
Cof. Civil - OAB/RS 17888

Escala: 1/50

Área Total: 225,60 m²

Local: TRAVESSA JOAQUIM BORGES, PONTÃO

Parceira: ÁGUA FRIA - DETALHES

Desenho: JAIR LEANDRO KEMFF

Data: ABRIL 2014